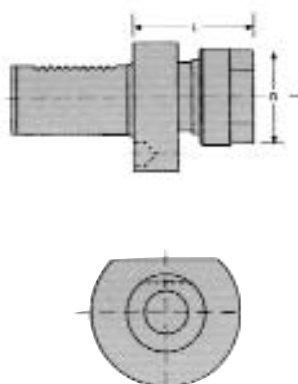


■ E3 Collet Chucks - TG Single Angle Collet System (Erikson)

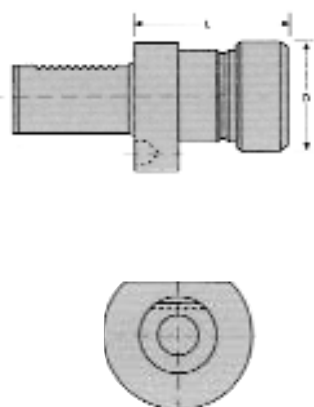


Ordering No.	L	Shank	Collet	Capacity	D	
VDI-30-TG100	75	Ø 30	100TG	6-25.5	63	
VDI-40-TG100	75	Ø 40	100TG	6-25.5	63	
VDI-50-TG100	75	Ø 50	100TG	6-25.5	63	
VDI-60-TG100	75	Ø 60	100TG	6-25.5	63	
VDI-40-TG150	90	Ø 40	150TG	12-40	88.5	
VDI-50-TG150	95	Ø 50	150TG	12-40	88.5	
VDI-50-TG150	100	Ø 60	150TG	12-40	88.5	

To DIN 69880
VDI 3425
Form E3

For Collets See Page 120

■ E4 Collet Chucks - ER Single Angle Collet System DIN. 6499



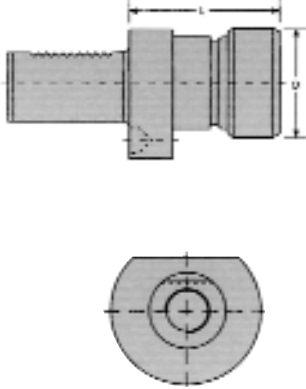
Ordering No.	L	Shank	Collet	Capacity	D	
VDI-20-ER16	40	Ø 20	ER16	1-10	28	
VDI-20-ER25	50	Ø 20	ER25	2-16	42	
VDI-20-ER32	60	Ø 20	ER32	3-20	50	
VDI-20-ER40	66	Ø 20	ER40	4-26	63	
VDI-30-ER25	75	Ø 30	ER25	2-16	42	
VDI-30-ER32	75	Ø 30	ER32	3-20	50	
VDI-30-ER40	75	Ø 30	ER40	4-26	63	
VDI-40-ER25	75	Ø 40	ER25	2-16	42	
VDI-40-ER32	75	Ø 40	ER32	3-20	50	
VDI-40-ER40	75	Ø 40	ER40	4-26	63	
VDI-50-ER40	75	Ø 50	ER40	4-26	63	
VDI-60-ER40	75	Ø 60	ER40	4-26	63	

To DIN 69880
VDI 3425
Form E3

For Collets See Page 120

E3 Collet Chucks - HLN

Single Angle Collet System DIN. 6388



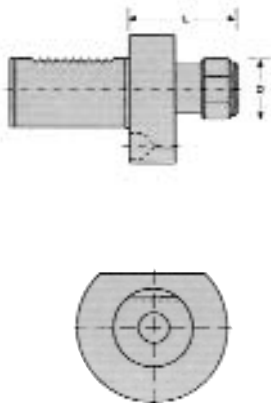
Ordering No.	L	Shank	Collet	Capacity	D	
VDI-20-HLN16	57	Ø20	415E	2-16	43	
VDI-30-HLN16	57	Ø30	415E	2-16	43	
VDI-30-HLN25	75	Ø30	462E	4-25.5	60	
VDI-40-HLN16	57	Ø40	415E	2-16	43	
VDI-40-HLN25	75	Ø40	462E	4-25.5	60	
VDI-40-HLN32	90	Ø40	467E	6-32	72	
VDI-50-HLN25	75	Ø50	462E	4-25.5	60	
VDI-50-HLN32	90	Ø50	467E	6-32	72	
VDI-60-HLN32	90	Ø60	467E	6-32	72	

Collets available contact our sales team for details.

**To DIN 69880
VDI 3425
Form E3**

E3 Collet Chucks - DA

Double Angle Collet System (Erikson)



Ordering No.	L	Shank	Collet	Capacity	D	
VDI-20-DA208	60	Ø20	200DA	1-10	27	
VDI-30-DA108	75	Ø30	100DA	2-14.5	35	
VDI-40-DA108	75	Ø40	100DA	2-14.5	35	
VDI-30-DA189	75	Ø30	180DA	3-20	39	
VDI-40-DA189	75	Ø40	180DA	3-20	39	
VDI-50-DA189	75	Ø50	180DA	3-20	39	
VDI-40-DA408	75	Ø40	400DA	6-25.5	63	
VDI-60-DA408	75	Ø60	400DA	6-25.5	63	

For Collets See Page 120

**To DIN 69880
VDI 3425
Form E3**